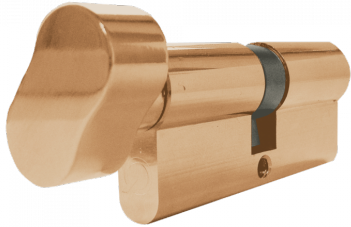


# greenteQ GreenteQ Gamma Euro Key & Turn Cylinder



## Description

---

GreenteQ Gamma 6 pin euro key & turn cylinders are supplied with 3 keys and are available in a range of sizes and finishes. They have been tested to achieve a corrosion resistance of grade 3, BS EN 1670 and meet the classification 16000C62 of BS EN 1303 (Cylinders for Locks), where it has been endurance tested to 100,000 cycles.

Using 6 tumblers per key provides pick protection and gives over 100,000 possible effective combinations thus helping to achieve a Key Security grade 6. The GreenteQ Gamma range is also fitted as standard with hardened anti-drill pins resulting in an attack resistance rating of grade 2 against drill, chisel and twisting attacks.



Supplied With 3 Keys



6 Pin Mechanism



Complies to BS EN 1303



Operated By Euro Cylinder

## Features

---

- Corrosion resistance of grade 3, BS EN 1670
- Tested to 100,000 cycles
- Supplied with 3 keys
- BS EN 1303 classification 16000C62
- Drill & pick resistant construction
- Over 100,000 key combinations

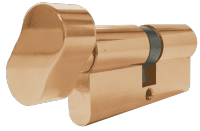
## Product Table

---



**L27089**

70mm 35/T35 (30/10/T30) KD NP



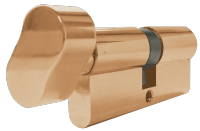
**L27090**

70mm 35/T35 (30/10/T30) KD PB



**L27091**

80mm 40/T40 (35/10/T35) KD NP



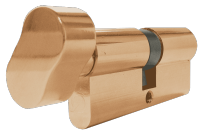
**L27092**

80mm 40/T40 (35/10/T35) KD PB



**L27093**

90mm 45/T45 (40/10/T40) KD NP



**L27094**

90mm 45/T45 (40/10/T40) KD PB