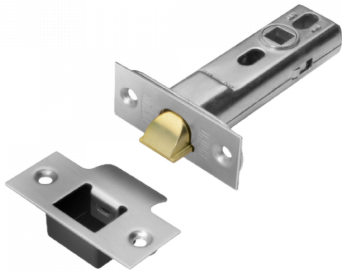




## UNION HD26 Dual Finish Heavy Duty Tubular Latch



### Description

---

The Union Tubular HD™ heavy duty tubular latch is specially designed to exceed the usual demands of everyday use. With a durable bevelled latch and a cast steel follower for improved resistance against abuse, this latch is ideal for both commercial and residential use. Fully tested to EN12209 and CE Marked, this latch is suitable for use on 30 and 60 minute timber fire doors and comes with a 10 year guarantee.

This latch comes supplied with both polished brass and stainless steel faceplate and strike, a choice of a radius or square forend and is available in 70mm or 82mm case depth.



10 Year Guarantee



Complies To BS EN  
12209



Reversible Handing

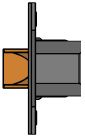
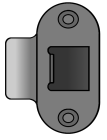
### Features

---

- Double sprung to prevent handle drop and to allow universal handing
- Suitable for use on 30 and 60 minute timber fire doors
- CE Marked: EC Certificate 0086-CPR-633283
- Available in 70mm and 82mm case depths, suitable for bolt through fixing
- Supplied as dual finish (both stainless steel and polished brass finish faceplates and adjustable strikes supplied)
- Fully Tested to BS EN 12209 : 2003

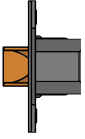
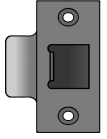
## Product Table

---



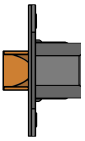
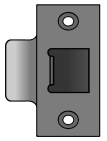
**L24851**

70mm Long With Radius Forend Boxed



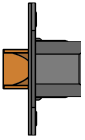
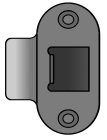
**L24849**

70mm Long With Square Forend Boxed



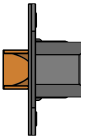
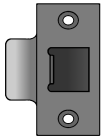
**L24853**

70mm Long With Square Forend Visi



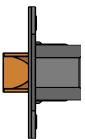
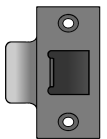
**L24852**

82mm Long With Radius Forend Boxed



**L24850**

82mm Long With Square Forend Boxed



**L24854**

82mm Long With Square Forend Visi