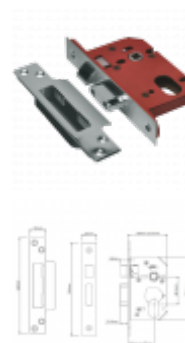
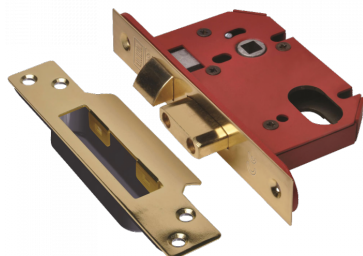




UNION JL220VS StrongBOLT Oval Sashcase



Description

As well as the unique chamfered bolt design, the UNION StrongBOLT™ has been further developed based on extensive research and feedback. It now also incorporates an easy reversible radius latch that uses the unique UNION SwitchLatch™ technology, anti rattle adjustable strike for onsite fine tuning, and plastic splinter guard for easy installation and a professional finish.



10 Year
Guarantee



60 Minute
Fire Rating



Complies To
BS EN 12209



Complies to
BS EN 3621



Fire Tested



Operated By
Oval Cylinder



Reversible
Handing

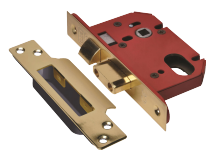


Secured by
Design
Approved

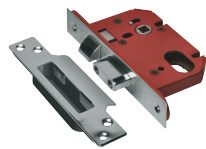
Features

- Square faceplate & radius inner forend for ease of installation
- Reversible radius latch
- Certifire approved
- CE marked
- Suitable for use on fire doors
- Pick, saw & force resistant

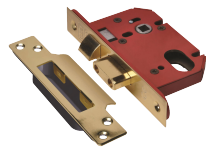
Product Table



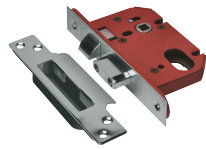
L19782
64mm PB Boxed



L19784
64mm SS Boxed



L19783
75mm PB Boxed



L19785
75mm SS Boxed