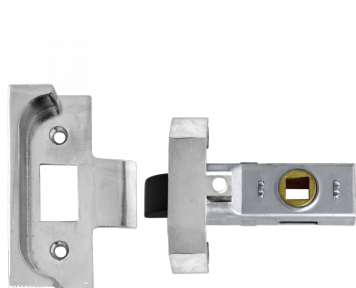




UNION 2650 Rebated Tubular Latch



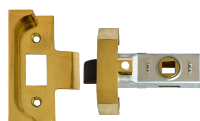
Description

2650 Rebated Tubular mortice latch

Features

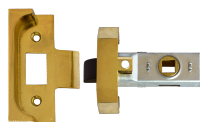
- 5 year guarantee
- En1634-1 use on 60 min timber fire doors
- Tested to over 1,000,000 cycles
- Not suitable for use with unsprung lever handles
- For timber doors hinged on the left or right and requiring lever handle operation
- 13mm rebated forend

Product Table



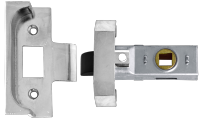
10007

64mm EB Bagged



L1463

64mm EB Visi



3371

64mm SE Bagged



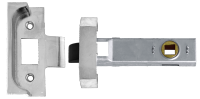
10008

80mm EB Bagged



L8796

80mm EB Visi



3372

80mm SE Bagged