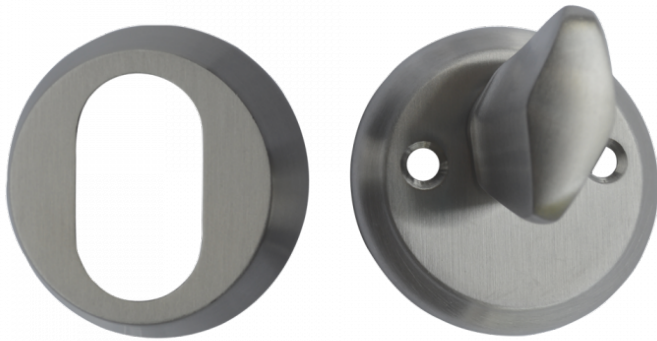




SKANEX External Cylinder Ring and Thumb Turn



Description

This Skanex 52mm diameter external cylinder ring and internal thumbturn is to suit Scandinavian cylinders. It is of solid Stainless Steel construction, is supplied complete with secure bolt through fixings that you can cut down on site to suit your application and is available in two depths (11mm & 13mm) to make it suitable for differing thicknesses of door and lengths of cylinder.



Reversible Handing

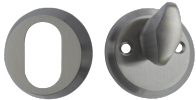


UK Manufactured

Features

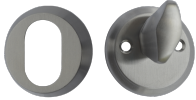
- 52mm diameter
- Croppable fixings
- Sold complete with fixings

Product Table



L27478

11mm deep



L27481

13mm deep