



Description

Designed and manufactured in the UK, this cam action door closer from Arrow features adjustable latching action and closing speed, making this unit highly suitable for use in hospitals, schools, theatres and residential homes where the occupants may benefit from a slower closing speed. CE marked and Certifire approved, this door closer has been fire tested to BS EN 1634 (part 1) for timber doors up to 120 minutes and steel doors up to 240 minutes.



Size 2 to 4



Adjustable
Closing Action



Adjustable
Latch Action



Complies To BS
EN 1154



Complies To BS
EN 1634



Fire Tested

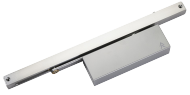


Reversible
Handing

Features

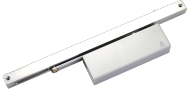
- Adjustable latching action and closing speed
- Cam action
- Pull-side only
- Non handed
- CF5038 Certifire approved
- Successfully tested to recommendations of EN1154, EN1155, EN1634 & BS8300

Product Table



L25750

Size 2-4 SE



L25751

Size 2-4 SNP



L25752

Size 2-4 SSS