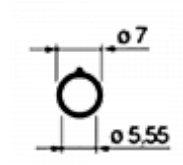




SILCA SLC3T Tubular Blank To Suit Silca



Description

The Silca SLC3T is a brass tubular blank with a hole diameter of 5.550mm (0.219 inches), a key length of 35mm (1.378 inches) and a stem diameter of 7mm (0.276 inches) to suit Silca locks.



Tubular Key

Features

- Stem diameter (B): 7.000mm (0.276in)
- Material: Brass
- Key length (A): 35.000mm (1.378in)
- Hole diameter (C): 5.550mm (0.219in)
- High quality Silca product

Product Table



L18972
SLC3T