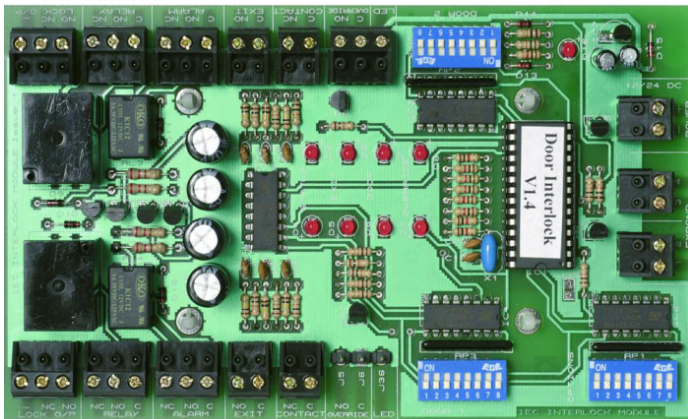




ALPRO IB1 Interlock Board



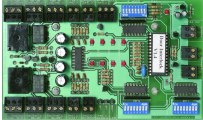
Description

The ALPRO IB1 interlock controller is designed specifically to be used as part of an access control system, with emphasis on the control of doors within that system, which need to be interlocked. Such as when one door is closed and locked the other door can be opened and operated. The interlock controller is a dual voltage unit operating on either 12/24v DC and offers flexibility with pluggable terminal blocks and nylon stick on mountings, which allow for expansion of the units capabilities.

Features

- Microprocessor controlled logic
- Independent controls for each door
- Door status LED's
- Fully expandable to infinite number of doors

Product Table



L13896
Metal Box