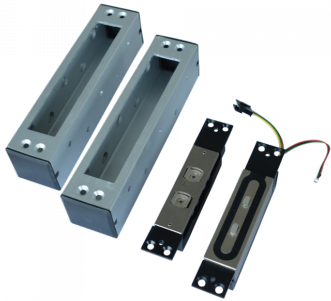




ALPRO 12V / 24V DC Compact Shearlock Shear Magnet



Description

The Alpro EMS1200 Compact Shearlock is available in Mortice or Surface Mount models (inc. Glass Mount) and provides slimline dimensions, maintaining a holding force in shear of 1200kg. Other benefits include built in PCB controller with switch selectable features and plug in 3 metre flying leads.



5 Year Guarantee



Electronically Monitored

Features

- Mortice & surface mounting
- Shear holding force of 1200kg
- Not suitable for vertical installation
- CE approved
- Cycle tested to 500,000 operations

Product Table



L18096
Mortice



L18097
Surface

