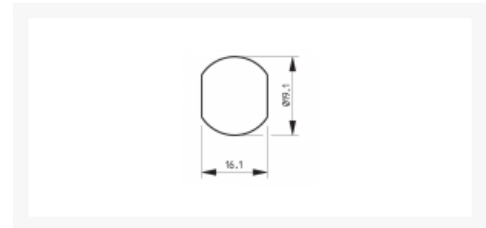




RONIS C4 Combination Cam Lock With Key Override



Description

RONIS C4 Combination Operated Nut Fixed Cam Lock has a 30mm body length, a 4 wheel combination giving 10,000 possible combinations and is suitable for installation in dry applications. It has an in-built key override, the cam has an 8.5mm crank and is patent protected. The code change is very easy and the edge of the dial is shaped to allow easy grip even with wet hands.



Combination
Mechanism



Cylinder Key




Key Override Facility

Features

- Nut Fixing
- 30mm Body Length
- Round Face
- 4 Wheel Combination
- Override key sold separately
- 10,000 Key Combinations

Product Table

	L26856 Black
--	------------------------