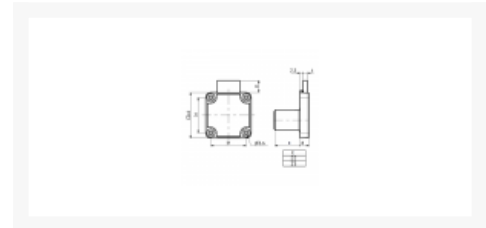
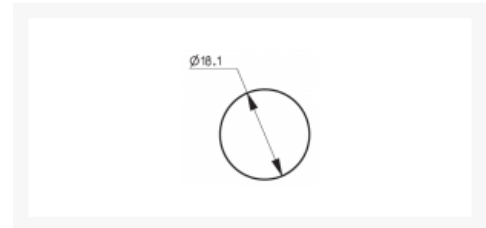
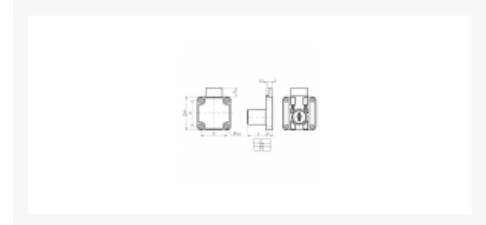




## RONIS 4500 Square Drawer Furniture Lock



### Description

RONIS 4500 Square Drawer Lock is supplied under the SM Master Key Series in a Bright Nickel Finish. It has 4 x 3.6mm fixing holes for a secure fit, is suitable for use on drawers up to 22mm thick, is supplied with 2 keys and has an 11mm bolt throw. The key operates the cylinder 180° to lock & unlock and can be removed in both the locked and unlocked positions.



Supplied With 2  
Keys



Cylinder Key



Keyed Alike



Master Keyed

## Features

---

- Screw Fixing (4 location)
- 22mm Body Length
- Square Face
- SM Key Series
- Differs cannot be guaranteed
- 200 Key Combinations

## Product Table

---



**L27422**

22mm NP KA under “SM” MK Series



**L26845**

22mm NP KD under “SM” MK Series