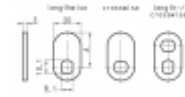
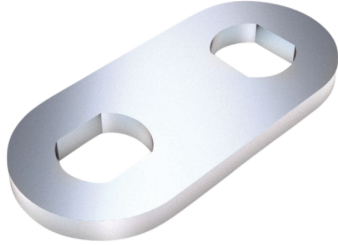




DOM 225-1 Flat Cam



Description

DOM 225 type 1 cam is flat style meaning that it is straight with no crank, it is 20mm wide, 3mm thick and has a radius end. The 30mm version has a single punch out fixing hole (8.1mm x 10.1mm) and the larger versions have 2 x 8.1mm x 10.1mm rectangular Lengthwise and crosswise fixing holes thus allowing them to be mounted in multiple positions.



Reversible Handling

Features

- Flat Construction
- 8.1mm x 10.1mm hole
- 20mm wide
- To suit Ronis cam locks
- Cam bar only

Product Table



L26838
30mm



L26839
40mm



L26840
50mm