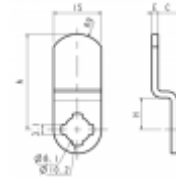
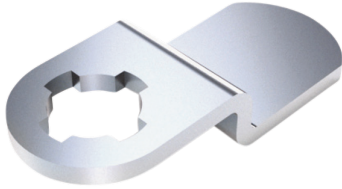




RONIS 4929-3 Cranked Cam



Description

RONIS 4929 type 3 cam is cranked style meaning that it has 2 bends in it making it offset. It is 15mm wide, 2mm thick, has a radius end, 8.1mm fixing hole and can be mounted in one of 4 positions in 90° increments.



Reversible Handing

Features

- Cranked Construction
- 8.1mm hole
- 15mm wide
- To suit Ronis cam locks
- Cam bar only

Product Table



L26827

20mm With 3.5mm Crank



L26828

30mm With 2.5mm Crank



L26829

42mm With 3.5mm Crank



L26830

50mm With 2mm Crank