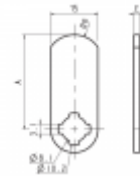
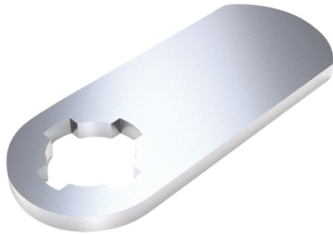




RONIS 4929-1 Flat Cam



Description

RONIS 4929 type 1 cam is flat style meaning that it is straight with no crank. It is 15mm wide, 2mm thick, has a radius end, 8.1mm fixing hole and can be mounted in one of 4 positions in 90° increments.



Reversible Handing

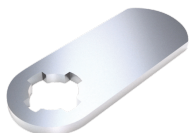
Features

- Flat Construction
- 8.1mm hole
- 15mm wide
- To suit Ronis cam locks
- Cam bar only

Product Table



L26824
20.5mm



L26825
30.5mm



L26826
39.5mm