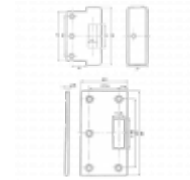
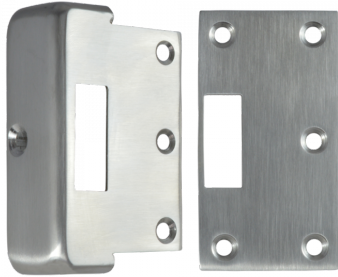




ASEC Rim Conversion Kit To Suit FB1 & FB2 Deadlocks



Description

A kit to allow FB1 & FB2 mortice locks to be used as rim locks.

Features

- To convert FB1 and FB2 mortice deadlocks to be used as rim locks
- Stainless steel

Product Table



L17107

Rim Conversion Kit