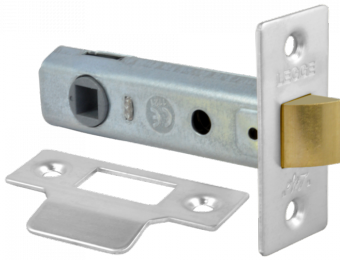




Legge 3721 & 3722 Tubular Latch



Description

These mortice tubular latches from Legge are suitable for use on internal doors with sprung lever handles. B3721 has a case depth of 64mm and the B3722 has a case depth of 76mm, both versions can be fitted to left or right hand opening doors and are available in two finishes - brass or nickel plated.

Features

- Unsprung
- Suitable for use on internal doors
- Strike included
- Countersunk screw holes
- 8mm high strength follower

Product Table



L11742

64mm EB Bagged



7746

64mm NP Bagged



L14872

64mm NP Visi



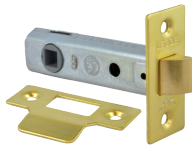
7767

64mm PB Bagged



7417

79mm NP Bagged



7773

79mm PB Bagged