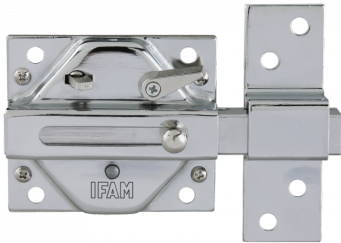




IFAM CS88M Deadbolt Rim Lock Dimple



Description

The IFAM CS88M is a Deadbolt Rim Lock with a steel body and 17mm square sliding bolt. This product is suitable for both left and right handed doors, has a nickel finish and is supplied with 5 keyed to differ dimple keys. The CS88M, furthermore, has a snib function that can hold the bolt in lock or withdrawn position. Once operated, this will prevent key holders from using the lock externally.



Supplied With 5 Keys



Dimple Key



Keyed To Differ



Reversible Handing

Features

- Snib function able to hold bolt in locked or withdrawn position
- Suitable for left & right handed doors and M Series dimple cylinders
- Nickel finish
- 17mm square sliding bolt
- Steel body rim lock
- Supplied with 5 dimple keys

Product Table



L23657
CS88M NP