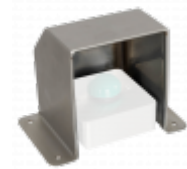




## RGL Exit Button Cover SSBC120



### Description

---

This protective cover from RGL is designed to be used with external buttons and measures 100mm(H) x 100mm(W) x 120mm(D). The extra deep enclosure provides easy operation and helps prevent unwanted activation, whilst protecting an exit button from exposure to the elements.

### Features

---

- Wear resistant etched legend - Exit Button
- Prevents unwanted activation
- Extra deep enclosure for easy operation
- Internal or external use

### Product Table

---



**L35034**

Stainless Steel