

## Description

With weather resistance and bolt-on fixing, the Gatemaster Bolt On Cylinder Exit Pushpad is designed to be robust, durable and easy to install. It comes supplied with a bolt guide plate and gate post strike plate, and the 16mm stainless steel latchbolt is adjustable in length, making it a versatile product. These locks are either left or right handed and designed to suit specific gate frame sizes, so please ensure you choose the correct product to suit the gate frame size.

01 Code Suffix - To Suit 10mm - 30mm gate frames

02 Code Suffix - To Suit 40mm - 60mm gate frames



1 Year Guarantee



Supplied With 3 Keys



Operated By Euro  
Cylinder



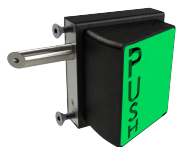
Weather Resistant

## Features

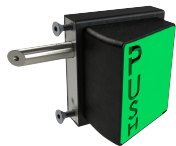
- Stainless steel 16mm latchbolt, which springs 22mm into the gate post
- Smooth locking action
- Designed to be bolted in place
- Marine Grade & Weather Resistant
- Adjustable latchbolt length
- Supplied with 3 keys, bolt support plate and fixing bolts

# Product Table

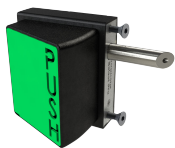
---



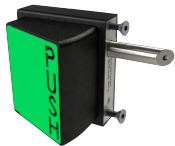
**L26936**  
LH - SBQEK6LL02 (40mm - 60mm)



**L26934**  
LH - SBQEKLL01 (10mm - 30mm)



**L26935**  
RH - SBQEKLR01 (10mm - 30mm)



**L26937**  
RH - SBQEKLR02 (40mm - 60mm)