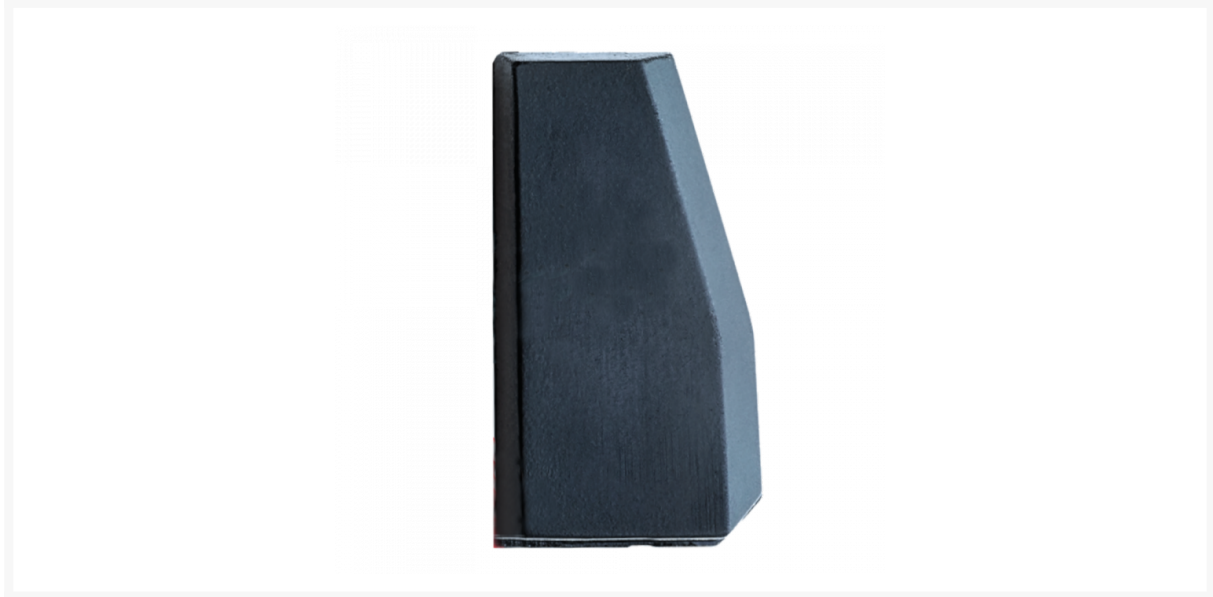




## SILCA GTI Ultra Universal Transponder Cloning Chip



### Description

---

The Silca GTI Ultra universal transponder cloning chip is designed for use with the Silca RW5 and the Advanced Diagnostics Smart Aerial+, and can also be used with the RW4 plus & FastCopy plus machines.

This carbon transponder chip replaces the GTI Pro and adds full ID48 cloning capability along with the 'UNIQUE to Silca' ability to clone a selected range of Renault, Dacia ID49-1E and ID6K/ID7K Hyundai Kia keys. Like its predecessor, GTI Ultra outperforms competitors in terms of durability and carries a 10 year guarantee.



10 Year Guarantee



Carbon Chip

## Features

---

- Replaces the GTI Pro chip
- For use with the Silca RW5 and the Advanced Diagnostics Smart Aerial+
- Adds full ID48 cloning capability
- UNIQUE to Silca! ability to clone a selected range of Renault, Dacia ID49-1E and ID6K/ID7K Hyundai/Kia keys

## Product Table

---



**L34130**

GTI Ultra C110026