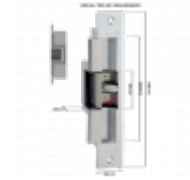
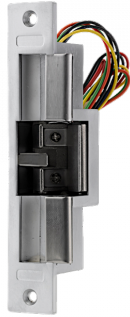




ICS DBR Series Electric Release 12VDC To Suit Deadbolt Monitored



Description

This DBR range electric release accepts a 13mm deadbolt and has bolt status output indicating bolt locked or unlocked status. It can be fitted both horizontally or vertically and is tested to 500,000 cycles. Two versions are available: Fail-Safe (power to lock) or Fail-Secure (power to unlock).



Electronically Monitored

Features

- Tested to 500,000 cycles
- Voltage tolerance +/- 10%
- Operating voltage 12Vdc
- Monitored bolt status indicates locked or unlocked
- Horizontal or vertical fitting
- Accepts 13mm deadbolt

Product Table



L33949

Fail Safe DBR-SAF



L33948

Fail Secure DBR-SEC