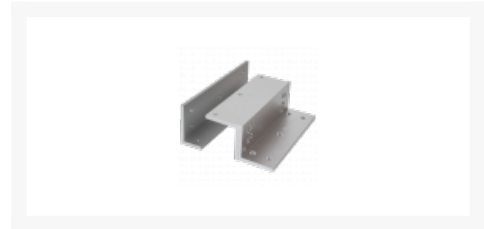




RGL Adjustable Bracket To Suit RGL Electro Magnetic Gate Lock



Description

This mounting bracket is designed for use with the RGL electro magnetic gate lock (L33545) and is available as L shape for outward opening gates or Z & L shape for inward opening gates.



IP66 Ingress Protection Rating



Electronically Monitored



Weather Resistant

Features

- Designed for use with the RGL electro magnetic gate lock
- Choice of outward open L bracket or inward open Z & L bracket
- Fixings kit included
- Z bracket allows 20mm maximum adjustment

Product Table



L33712

L Outward Open To Suit L33545



L33713

Z & L Inward Open To Suit L33545