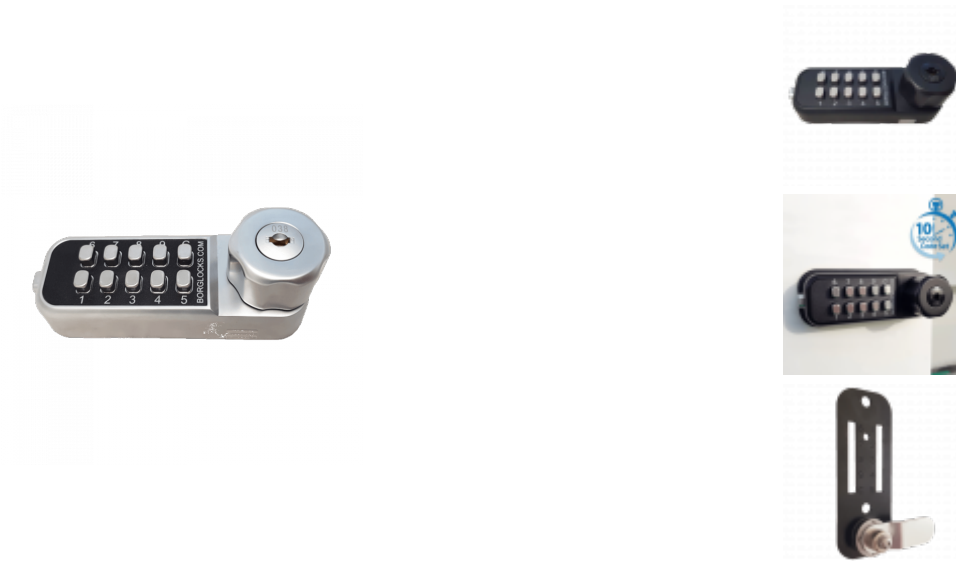




# BORG LOCKS BL1716 Horizontal Mini Cabinet Lock Easicode Pro c/w Cam And Key Override



## Description

The BORG LOCKS BL1716 is a horizontally mounted compact keypad with an internal cam mechanism and built in key over-ride. Just 110mm x 40mm in size it is part of the BL1000 series and designed for metal cabinets, lockers and cupboards. The code can be easily changed on the door due to the ECP coding mechanism and there is a preview pane on the inside cam to see the buttons currently used in the code.

Available in satin chrome finish for internal applications or in black MG Pro coating designed for marine grade applications. The black finish is 1000 hours salt spray tested and recommended for use where harsh weather and conditions are expected.



11 Buttons



Key Override Facility



Weather Resistant

## Features

- Suits doors 2mm to 25mm thick
- Over 500 code combinations
- Reversible handing
- Supplied with 1 x straight cam and 1 x cranked offset cam
- Easy on the door code change
- Key over-ride feature - 1 key supplied
- Knob operated horizontal cabinet lock

## Product Table

---



**L33651**

BL1716 MG Pro



**L33647**

BL1716 SC ECP