

Description

This Gatemaster gate closer is suitable for gates up to 50kg in weight with a maximum width of 1000mm. The gate can be held open at 90° and it has two variable closing speeds for closing and latching.

In situations where the pivot point on the gate does not line up with the pivot point on the closer then choose the SMR which includes a slide rail.



Weather Resistant

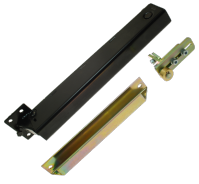
Features

- Can be used to hold gate at 90° angle
- Two variable closing speeds for closing and latching
- To suit gates up to 50kg

Product Table



L33103
SMC



L33104

SMR - With Sliding Rail