

Description

The Briton 5720 is a DIN standard euro profile sashlock suitable for lockable doors using lever furniture to withdraw the latchbolt. It has a 60mm backset with 72mm centres and a profiled latch which is reversible. One turn of a cylinder will throw the bolt 20mm. The 5720 sashlock has been fire tested to EN 1634-1 for use on fire doors up to 1hr timber / 4hr steel when used with the appropriate intumescent kit (Briton 5000.IP).



10 Year Guarantee



60mm Backset



Complies To BS
EN 12209



72mm Centres

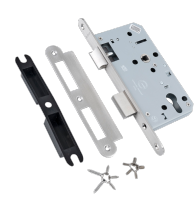


Operated By
Euro Cylinder

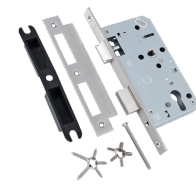
Features

- Reversible
- Bolt through fixing holes to DIN 18251
- 20mm single throw bolt
- Profiled latch and forend
- Backset: 60mm
- Centres 72mm
- Quick reversible latch
- Galvanised steel lockcase with satin nickel plating for corrosion resistance
- Grade 316 stainless steel single piece round or square forend
- EN 1634-1 and Certifire approved when used with the appropriate intumescent kit

Product Table



L32968
Radius 5720.60.R.SS



L32969
Square 5720.60.S.SS