



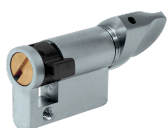
Description

Euro profile thumbturn cylinder only (Blind cylinder)

Features

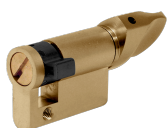
- Dimensions to centre of cam
- Suitable for use in situations that require thumbturn operation from one side only

Product Table



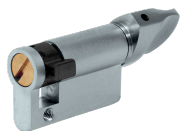
L7028

41mm (32-9) NP



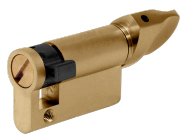
L7027

41mm (32-9) PB



L7025

46mm (37-9) NP



L7026

46mm (37-9) PB