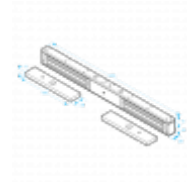
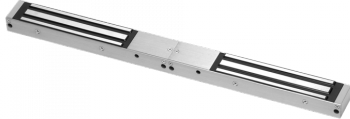




ICS U-Series 12/24VDC Mini Double Surface Magnet



Description

Double mini magnet by ICS security with an operating voltage of 12 or 24 Vdc. This magnet has a holding force of 272kg (600lbs) per door, operating temperature between 10°C & 55°C (14°F & 131°F) and a current draw of 500mA at 12Vdc, & 250mA at 24Vdc.



1 Year Guarantee



Electronically Monitored

Features

- Humidity 0 to 95% non-condensing
- Operating temperature between -10 & 55°C (14 & 131°F)
- 12 or 24 Vdc operating voltage
- Double surface magnet
- Holding force of up to 272 kg (600lbs) per door

Product Table



L32519

U10004 Non Monitored



L30076

U10004-DSU Non Monitored With Door Status



L32520

U10005 Monitored