

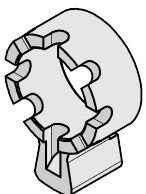
Description

A selection of cams to be used with EVVA modular cylinder systems.

Features

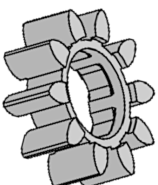
- To be used with Evva modular cylinder systems
- Choice of cam

Product Table



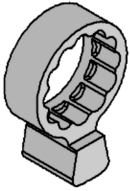
L12577

Adams Rite (RM) No 305669



L32941

DOZ Universal 10 Tooth Cog Wheel Cam C/W BSZ Coupl



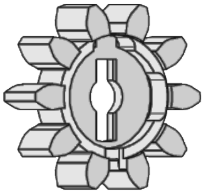
L32940

DOZ Universal Zinc Cam



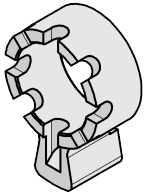
L32944

DOZ V-Cam (Trelidor)



L8270

DZ Cog Wheel (10 Tooth) Compact



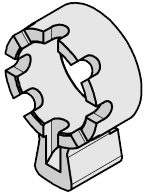
L12576

DZ Compact No 308854



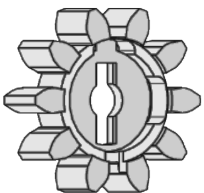
L15987

DZ Compact `Lince Cam`



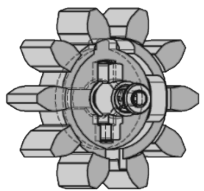
L12928

DZ Symo (BSZ Coupling) No 43102400



L12929

DZ Symo Cog Wheel (10 Tooth) No 43401886



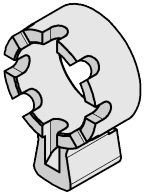
L12930

DZ Symo Cog Wheel (BSZ Coupling) No 29000786



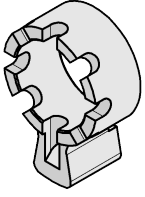
L12926

DZ Symo No 0043151304



L15985

DZ Symo `Lince Cam` No AP034016



L15989

DZ Symo `Prag Cam` No AP020004



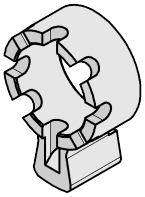
L15130

DZ `Prag Cam` Compact No AP020004



L12575

HZ Compact No 0043151150 8 Position



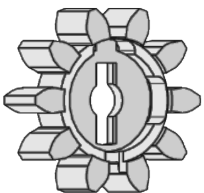
L12934

HZ Symo 8 Position No 0043151525



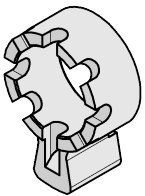
L20274

KDZ c/w DOZ SOS Coupling & Disc 0029000868



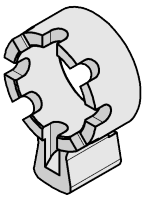
L15129

KDZ Cog Cam Compact (10 Tooth) No 43401080



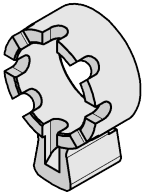
L12580

KDZ Compact No 308692



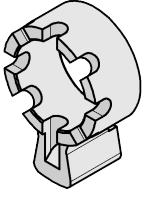
L15988

KDZ Compact `Lince Cam`



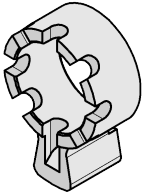
L15986

KDZ Symo `Lince Cam` No AP059010



L15990

KDZ Symo `Prag Cam` No AP021005



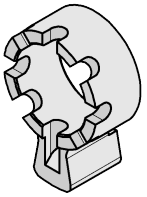
L15131

KDZ `Prag Cam` Compact No AP021005



L12579

ODZ Compact No 3087042



L12574

OHZ Compact Np 3073947 8 Position



L12573

OKZ Compact No 0043150820