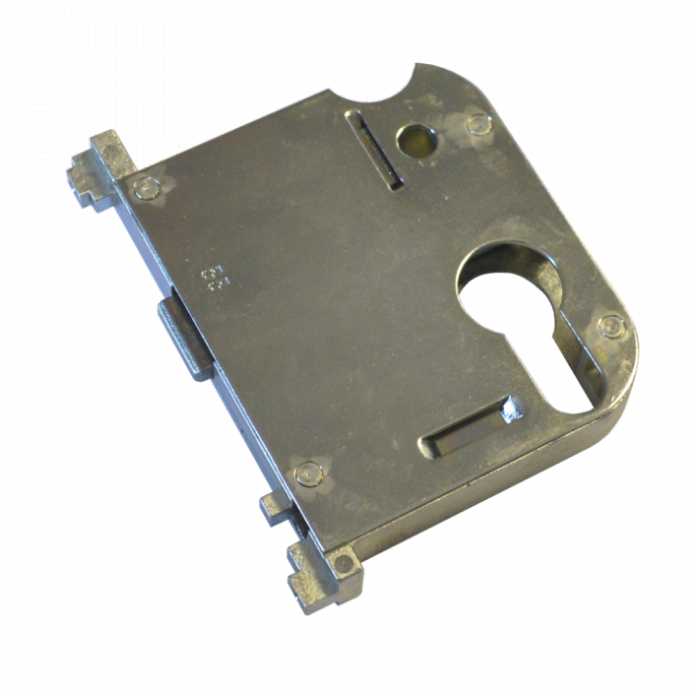




WINKHAUS Box Keep To Suit STV Thunderbolt



Description

A box keep to suit the hook locking points of the Winkhaus STV Thunderbolt multipoint locks. The keep is reversible to suit both left and right handed applications.



Reversible Handling

Features

- Reversible to suit both handings
- Suitable for PVCu and timber doors
- To suit Winkhaus STV Thunderbolt multipoint locks

Product Table



L32146
55mm