

Description

An Ewa KDZ turn module used to build modular key & turn euro cylinders, it is fitted with an X1K turn that is easily removable using a spring-loaded pin within the collar of the turn from the underside.

Features

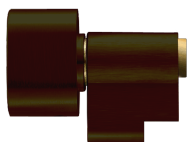
- Turn can easily swapped out if required
- Available in a range of finishes
- For use when assembling modular cylinders
- Comes with X1K Turn as standard

Product Table



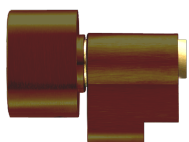
L31868

Black



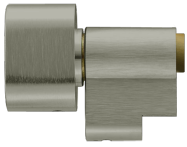
L31867

BMA (Dark Bronze)

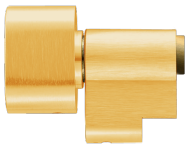


L31866

LB (Light Bronze)



L31861
NP



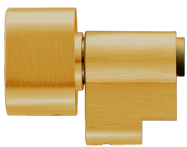
L31862
PB



L31863
PCP



L31864
PN (Polished Nickel)



L31865
SB (Satin Brass)