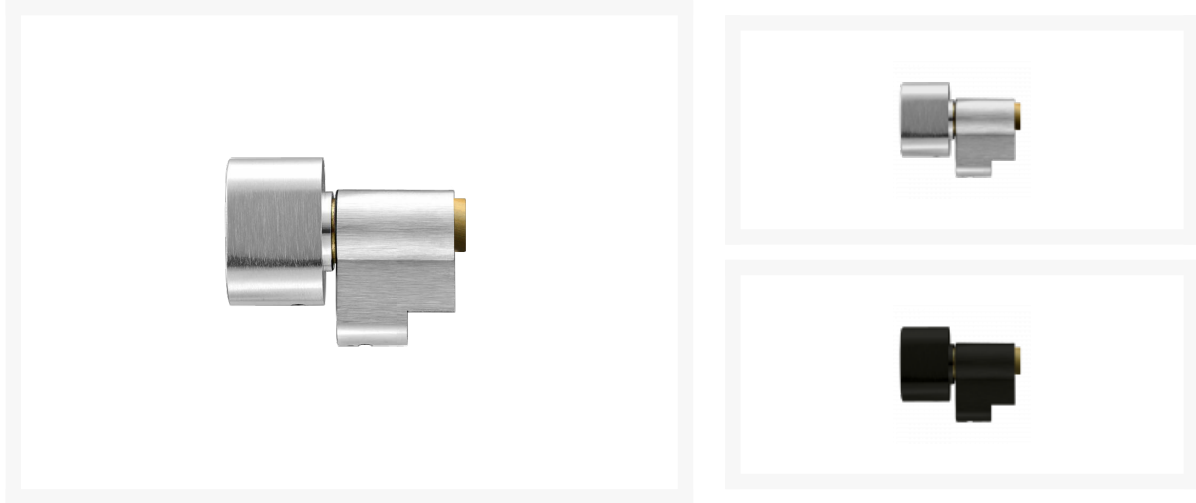




EVVA Unified Short KDZ Module X1K



Description

An Eeva short KDZ turn module used to build modular key & turn euro cylinders, it is fitted with an X1K turn that is easily removable using a spring-loaded pin within the collar of the turn from the underside.

Features

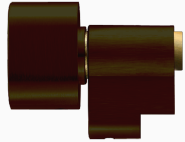
- For use when assembling modular cylinders
- Comes with X1K Turn as standard
- Available in a range of finishes
- Turn can easily swapped out if required

Product Table



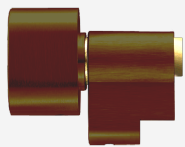
L31876

Black



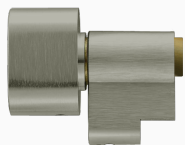
L31875

BMA (Dark Bronze)



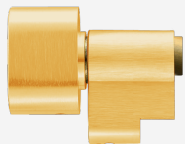
L31874

LB (Light Bronze)



L31869

NP



L31870

PB



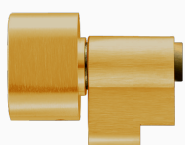
L31871

PCP



L31872

PN (Polished Nickel)



L31873

SB (Satin Brass)

