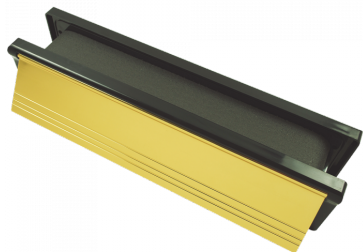




## FIRESTOP 305mm Intumescent Telescopic Letter Plate



### Description

---

With an ABS plastic frame and metal flap, these stylish letter boxes from Firestop are fully tested and certified in regards to fire and smoke applications. They are fitted with a high performance intumescent liner, which expands when heated, helping to protect door furniture and prevent the spread of fire. Additionally, the letter plate is available in different colours and sizes and also features an internal draught excluder and external weatherseal.



30 Minute Fire Rating



Complies To BS EN 1634



Complies To BS 476



Weather Resistant

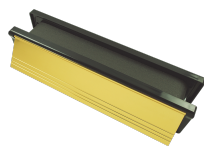
### Features

---

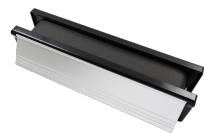
- A variety of finishes and sizes available
- Stylish design
- Internal draught excluder
- Intumescent seal expands when heated to help secure door furniture and prevent the spread of fire
- Fully fire and smoke tested

# Product Table

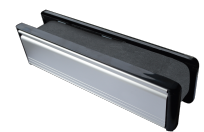
---



**L31234**  
Gold



**L31236**  
Polished Silver



**L31235**  
Satin Anodised Aluminium