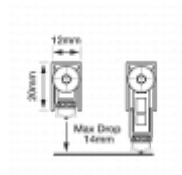
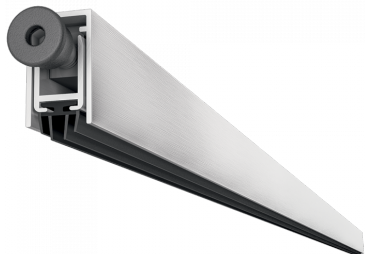




## FIRESTOP Trend Drop Down Seal



### Description

The FIRESTOP Trend Drop Down Seals are designed to form an effective barrier against the outside climate, including noise, light, fire, smoke and insects, and are activated by the closing action of the door, meaning the seal only drops down when the door is closed. The seals are available in a variety of lengths and can be cut down to size (200mm maximum trimming length). These units are recessed into the bottom of the door for a discrete installation. The seals are acoustically tested in accordance with BS EN ISO 10140-1 & BS EN ISO 10140-2 achieving a rating of up to 39dB Rw, fire tested to BS EN 1634-1 & BS476: Part 22 to 60 minutes and smoke tested to BS EN 1634-3: 2004. It has an aluminium body with a self-directing reinforced plunger and is endurance-tested to 200,000 cycles with a 14mm maximum drop.



60 Minute Fire Rating



Complies To BS EN 1634



Complies To BS 476



Fire Tested

### Features

- Suitable for timber doors
- Self-extinguishing therm type high quality co-extruded seal
- Smoke tested to BS EN 1634-3: 2004
- Fire tested to BS EN 1634-1 BS476: Part22 to 60 minutes
- Acoustically tested achieving up to 39dB Rw
- Seal activated by the closing action of the door

# Product Table

---

A perspective view of a silver-colored roller with a black wheel and a mounting bracket.

**L31333**  
1026mm

A perspective view of a silver-colored roller with a black wheel and a mounting bracket.

**L31330**  
726mm

A perspective view of a silver-colored roller with a black wheel and a mounting bracket.

**L31331**  
826mm

A perspective view of a silver-colored roller with a black wheel and a mounting bracket.

**L31332**  
926mm