

ADAMS RITE 281 Series Double Magnet



Description

This high strength double magnet from Adams Rite's Armlock 281 range boasts a magnetic holding force of at least 510kg and it is suitable for use on outward opening aluminium, timber or steel doors. These magnets are fail unlocked and they are available as either monitored or non-monitored.

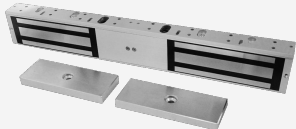


Electronically Monitored

Features

- Features clean aesthetics
- Facilitates remote access and exit control of any aluminium, timber or steel door
- Maintains a magnetic holding force of at least 510kg (1120 lbs)
- Durability and low maintenance
- Monitored and non-monitored available
- To suit outward opening doors

Product Table



L6076

Monitored



L6075

Unmonitored