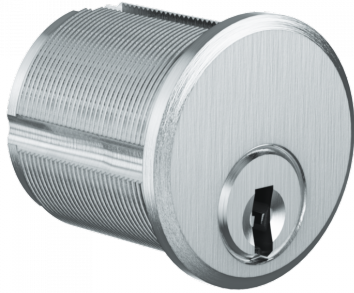




EVVA ICS RM2 Screw-In Cylinder 1 Bitted



- SCREW-IN CYLINDER LENGTHS -	
RM SIZE 1.....	25.5mm
RM SIZE 2.....	28.5mm
RM SIZE 3.....	32mm
RM SIZE 4.....	40mm
RM SIZE 5.....	50mm
RM SIZE 6.....	60mm

Description

This Eeva ICS cylinder is supplied 1 bitted with no keys or sidebars, these can only be ordered by customers who have registered their own section with our Eeva Department.

ICS is a durable, patent protected reversible key system designed with maximum keying potential in mind so master key systems can be planned ahead to take into account potential extensions. The system contains a wide variety of cylinders covering virtually any application and offers both legal and technical key protection mechanisms to ensure a high degree of protection against key copying.



Supplied With No Keys



1 Bitted



Call For Key Cutting Services

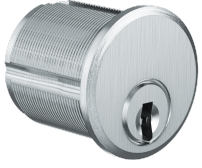


Call For Workshop Services

Features

- High level of protection against key copying
- Maximum keying potential
- Can only be ordered by customers who have registered their own section
- Patented & registered system
- British Standard EN 1303:2005
- Supplied 1 Bitted with no keys or sidebars

Product Table



L27796
NP 000EI