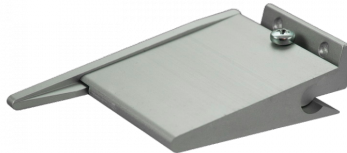


DORLINE SAA Door Selector MK1



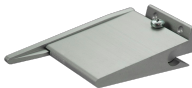
Description

This wedge shaped door selector is designed to ensure the correct closing sequence on a pair of rebated double doors by holding the first opening leaf open until the second leaf has closed. With a modern satin anodised aluminium finish, supplied with all fixing plates and tested to BS EN 1158, this product is both stylish and practical, making it ideal for use both in the workplace and at home.

Features

- Wedge shape
- To suit timber doors up to 1220mm width
- Successfully tested to BS EN 1158
- Designed to be fitted to the first opening leaf (second closing leaf)
- Ensures correct closing sequence
- To suit rebated double doors

Product Table



10119

Non Fire Rated (MK1)