



## ERA Fab & Fix Nu-Mail Secure Cowl To Suit Letterplates



### Description

This Nu-Mail Letterplate Security Shield Cowl from Era's Fab & Fix Range is designed for use with the TS008 Nu-Mail 76mm letterplate on external doors. It helps to prevent unwanted access via the letterbox while allow entry of post items. The cowl is available in a range stylish finishes to match your letterplate and other door furniture. The combination of the Nu Mail 76mm letterplate and security shield has been successfully tested to the latest TS008:2015 standards for doors and it is fully compliant to the latest PAS24 requirements and Document Q. It is suitable for jack nut and screw through fixing and it is supplied with all components required for jack nut installation. The Nu-Mail cowl has a high quality zinc construction, it is Secured by Design (Police approved specification) and it is supplied complete with a 10 year guarantee.



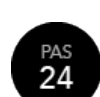
10 Year Guarantee



Complies To BS EN 1670



Kitemarked Product



PAS24



Secured by Design Approved



Weather Resistant

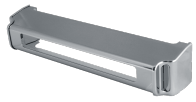
### Features

- Allows clear access for postal items
- Secured by Design (SBD licence held by ERA Home Security Limited)
- Tested for 480 hours corrosion resistance
- Designed to prevent intruder access, for added door security
- Choice of finishes to match letterplate
- TS008 accreditation

- Supplied with all required fixings and cover caps

## Product Table

---



**L29722**  
Chrome



**L29724**  
Graphite



**L29720**  
White