



## Description

---

The Chubb safe Sigma Deposit Safe is ideal for situations where you require items to be put into the safe such as money, documents, vouchers and cheques without the need to open the door allowing access to the contents within. It is constructed with an 8mm steel door and 3mm steel body and has hardened steel plates protect boltwork and lock against drilling.



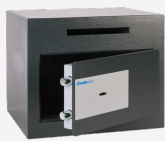
Heavy Item (may incur delivery costs)

## Features

---

- Deposit slot (170mm x 16mm)
- Recommended cash rating of £1,500
- Fitted with an anti-fishing device to prevent unauthorised removal of deposited items
- Fixing kit allows DIY base or rear fixing of safe
- Available with double bitted key lock or electronic lock (sizes 2 & 3 only)
- Override key supplied with electronic version

# Product Table



**L21760**

1K - 305mm X 375mm x 350 (27Kg)



**L21762**

2E - 375mm X 375mm x 350 (33Kg)



**L21761**

2K - 375mm X 375mm x 350 (33Kg)



**L21764**

3E - 475mm X 375mm x 350 (38Kg)



**L21763**

3K - 475mm X 375mm x 350 (38Kg)