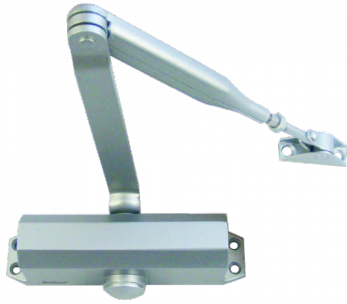


Briton BRITON 121CE Size 3 Overhead Door Closer



Description

The 121CE Briton Overhead Door Closer is a versatile and cost effective option which is suitable for the most popular door sizes. With a strength size of 3, the closer is suitable for doors with a maximum weight of 60kg and they have also been tested to EN1634 for suitability for up to 2 hours on timber fire doors. They are CE marked and Certifire approved as well as tested to BS EN1154 and they come with a 10 year manufacturer's guarantee for maximum peace of mind.

This closer is supplied with fixings for regular and transom mounting, and it is now also supplied with a parallel bracket. The 121CE features fully adjustable latching and closing action and it is easily reversible, providing added convenience.



Adjustable Closing
Action



Adjustable Latch Action



Fire Tested



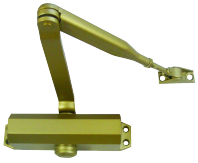
Reversible Handing

Features

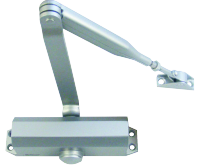
- Fig 66 bracket and stand open arm are available
- Supplied with fixings for regular and transom mounting - now also supplied with parallel bracket at no added cost
- Fixed power size 3
- Successfully tested to recommendations of EN1154 & EN1634
- 10 year warranty

- Matching arms

Product Table



L14369
Gold (GE)



L14368
Silver (SES)