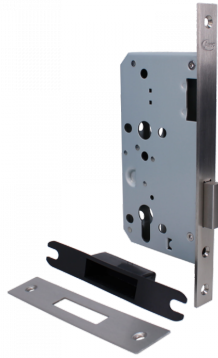




## ASEC DIN Euro Deadcase



### Description

---

The ASEC DIN Euro Deadcase is a European contract modular lockcase, allowing simplified door preparation and lock interchangeability. Thanks to its silver powder coating, the lock provides excellent corrosion resistance and is CE marked and UK Conformity Assessed (UKCA).



5 Year Guarantee



60mm Backset



CE Marked Product



Operated By Euro  
Cylinder



UK  
Conformity  
Assessed  
(UKCA)

### Features

---

- Suitable for unsprung bolt-through lever furniture
- Zinc coated steel case
- Suitable for use on 1/2 hour & 1 hour fire doors
- CE marked, UK Conformity Assessed (UKCA) & conforms to EN 12209 standards
- DIN standard lock case
- Forend: Grade 304 stainless steel with a satin finish

# Product Table

---



**AS10445**  
60mm SS Radius Boxed



**AS10446**  
60mm SS Square Boxed