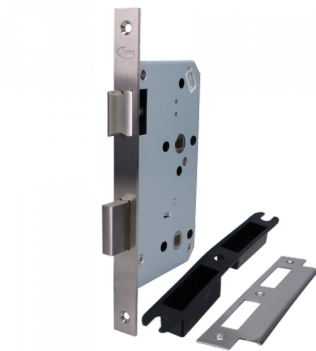




ASEC DIN Mortice Bathroom Lock



Description

The ASEC DIN Bathroom Lock is a European contract modular lock, allowing simplified door preparation and lock interchangeability. Thanks to its silver powder coating, the lock provides excellent corrosion resistance and is CE marked and UK Conformity Assessed (UKCA).



5 Year Guarantee



60mm Backset



Bathroom
Mechanism



CE Marked
Product



78mm Centres



UK Conformity
Assessed (UKCA)

Features

- Suitable for unsprung bolt-through lever furniture
- Zinc coated steel case
- Suitable for use on 1/2 hour & 1 hour fire doors
- CE marked, UK Conformity Assessed (UKCA) & conforms to EN 12209 standards
- DIN standard lock case
- Forend: Grade 304 stainless steel with a satin finish

Product Table



AS10449
60mm SS Radius Boxed



AS10450
60mm SS Square Boxed