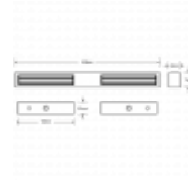
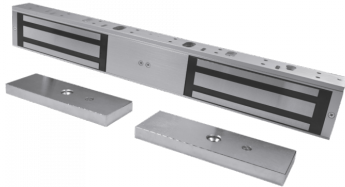




# ASEC Standard Double Magnet



## Description

---

12VDC / 24VDC double magnet available monitored or unmonitored. Designed for double door applications.



Electronically Monitored

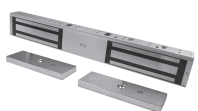
## Features

---

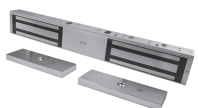
- AS8536 is Unmonitored
- AS8537 is Monitored
- Hall monitoring
- Monitored version - C/NO/NC contacts
- Satin anodised aluminium finish
- Continuously rated

## Product Table

---



**AS8537**  
Monitored



**AS8536**  
Unmonitored

