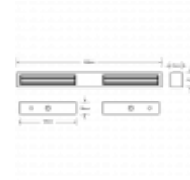
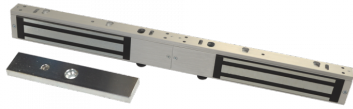




ASEC Slim Line Double Magnet



Description

12VDC / 24VDC slim line double magnet available monitored or unmonitored. Designed for double door applications.

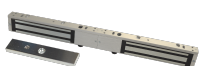
MON

Electronically Monitored

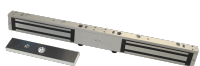
Features

- AS8531 is Unmonitored
- AS8532 is Monitored
- Monitoring is hall effect
- Monitored version - C/NO/NC contacts
- Satin anodised aluminium finish
- Continuously rated

Product Table



AS8532
Monitored



AS8531
Unmonitored

