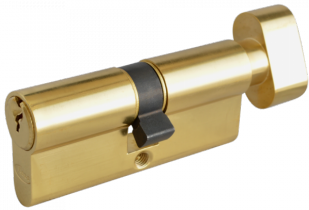




ASEC 6-Pin Euro Key & Turn Cylinder



Description

The Asec 6 pin euro key & turn cylinder is a good entry level cylinder, it is supplied complete with 3 keys and a retaining screw and is available in a choice of sizes and finishes.



Supplied With 3 Keys



6 Pin Mechanism



Keyed To Differ



Call For Key Cutting Services

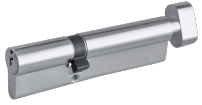


Call For Workshop Services

Features

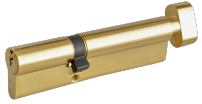
- This cylinder can be keyed alike or master keyed through our workshop
- Cylinder Retaining Screw Included
- Supplied with 3 Keys

Product Table



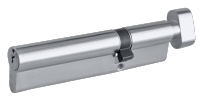
AS10881

120mm 45/T75 (40/10/T70) KD NP



AS10882

120mm 45/T75 (40/10/T70) KD PB



AS10879

120mm 75/T45 (70/10/T40) KD NP



AS10880

120mm 75/T45 (70/10/T40) KD PB



AS1422

70mm 35/T35 (30/10/T30) KD NP



AS10789

70mm 35/T35 (30/10/T30) KD NP Visi



AS1423

70mm 35/T35 (30/10/T30) KD PB



AS10790

70mm 35/T35 (30/10/T30) KD PB Visi



AS1424

80mm 40/T40 (35/10/T35) KD NP



AS10791

80mm 40/T40 (35/10/T35) KD NP Visi



AS1425

80mm 40/T40 (35/10/T35) KD PB



AS10792

80mm 40/T40 (35/10/T35) KD PB Visi



AS1460

85mm 40/T45 (35/10/T40) KD NP



AS1463

90mm 35/T55 (30/10/T50) KD NP



AS1462

90mm 55/T35 (50/10/T30) KD NP